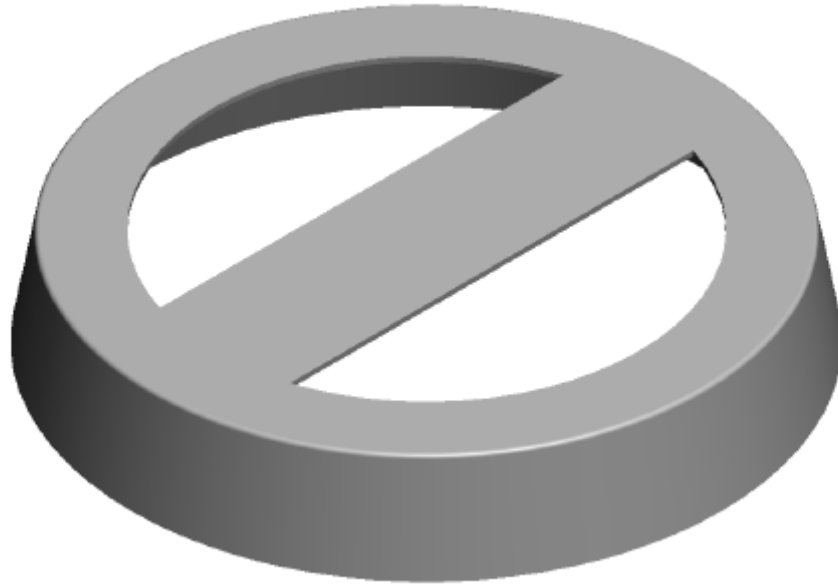


# Hole Forms For Use With Panel Forms And Wall Ties



It is becoming increasingly more popular for producers to use panel forms to produce boxes. The solid face of a standard fiberglass hole form interferes with panel form's required wall ties.

When requested, we can supply hole forms to accommodate the use of panel forms and wall ties.



**1900 Ray Davis Blvd.  
Seminole, OK 74868  
www.formcrete.com**

**800-876-2474 or 405-382-7700  
Fax: 405-382-7770  
E-mail: sales@formcrete.com**